

CHAMOT

Recombinant Human FasL

CM056-5HP
CM056-20HP
CM056-100HP
CM056-500HP
CM056-1000HP



CHAMOT

喬默生物技術(上海)有限公司
CHAMOT BIOTECHNOLOGY CO., LTD.

CONTENT

1 产品简介

2 产品组成

3 产品储存

4 产品使用

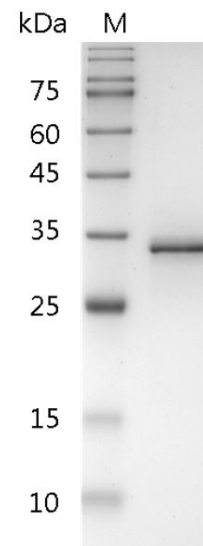
Recombinant Human FasL (Fas ligand)

编号:	CM056-5HP CM056-20HP CM056-100HP CM056-500HP CM056-1000HP	规格:	5 µg 20 µg 100 µg 500 µg 1 mg
类别:	重组蛋白	应用:	Functional Assay

产品简介

描述: FasL is a member of the TNF superfamily, and is mainly expressed on the cell surface of activated T cells. FasL induces apoptosis in Fas-bearing cells by binding to Fas Receptor. FasL has the ability to leads to down-regulation of the immune response through killing T cells and activated B cells. The mechanism of Fas-induced apoptosis involves recruitment of pro-caspase 8 through an adaptor molecule called FADD, followed by processing of the pro-enzyme into active forms. These active caspases then cleave various cellular substrates, leading to the eventual cell death.

来源: *Escherichia coli*
纯度: >98% as determined by SDS-PAGE.
生物学活性: Measure by its ability to induce apoptosis in Jurkat cells. The ED₅₀ for this effect is < 1 ng/mL. The specific activity of recombinant human FasL is > 1 x 10⁶ IU/mg.
内毒素检测: < 0.1 EU per 1 µg of the protein by the LAL method.



SDS- PAGE analysis of recombinant human FasL

蛋白序列: QIGHPSPPPEKKELRKVAHLTGKSNSR
 SMPLEWEDTYGIVLLSGVKYKKGGLVI
 NETGLYFVYSKVYFRGQSCNNLPLSHK
 VYMRNSKYPQDLVMMEGKMMSYCT
 TGQMWARSSYLGAVFNLTADHLYV
 NVSELSLVNFEESQTFFGLYKL with
 polyhistidine tag and sumo tag at
 the N-terminus

产品组成

成分: 从含有 1X PBS, pH 8.0 溶液中冻干的
 蛋白质.

产品储存/运输

产品形式	储存温度	储存时间
冻干粉	-20℃至-80℃	自收到之日起1年
重悬液 (初始)	2℃至8℃	不超过1周
重悬液 (经稀释)	-20℃至-80℃	3到6个月

运输方式: 蓝冰

产品使用

- 1、开盖前，建议3000-3500rpm离心5min。
- 2、推荐使用无菌水重悬冻干粉，溶液浓度不低于100μg/mL，不高于1mg/mL，并室温静置至少20min以充分溶解。勿涡旋剧烈振荡。
- 3、重悬后的溶液，2-8℃无菌保存不超过1周。
- 4、如需长期保存，推荐使用无菌的含载体蛋白（如0.1%BSA、10%FBS或5%HSA）的溶液进一步稀释（不低于10ug/mL）后分装保存，-20℃至-80℃无菌保存3到6个月。无血清实验需求时，可更换为5%海藻糖溶液作为载体。避免反复冻融。

WB= Western Blot; IP= Immunoprecipitation; IF= Immunofluorescence; IHC= Immunohistochemistry;
 FACS= Fluorescence activated Cell Sorting; FA= Functional Assay